



Super Mini Residential Roll Shutters

by WSDS



New Super Mini

Rolling shutters are exposed to all kinds of weather and environment conditions, causing many problems for aluminium shutters with conventional finishes. Are you aware of this situation? Warm Protection is. Super Mini Profiles will resist the most adverse influences. They are Double Coated with a final PVC lacquer, for an abrasion resistant finish. Compared to profiles with conventional coatings the Warm Protection Standard has considerable advantages:

- high abrasion resistance
- increased thickness of coating
- improved protection against corrosion
- high coloured stability against UV degradation

All these improvements increase the durability of Warm Protection aluminium shutters.

The profiles are precision roll formed from high quality aluminium alloy. For additional strength, security and a smooth, silent Operation a foam core is injected into the profiles. The quality finish is available in many tasteful colours to suit your home.

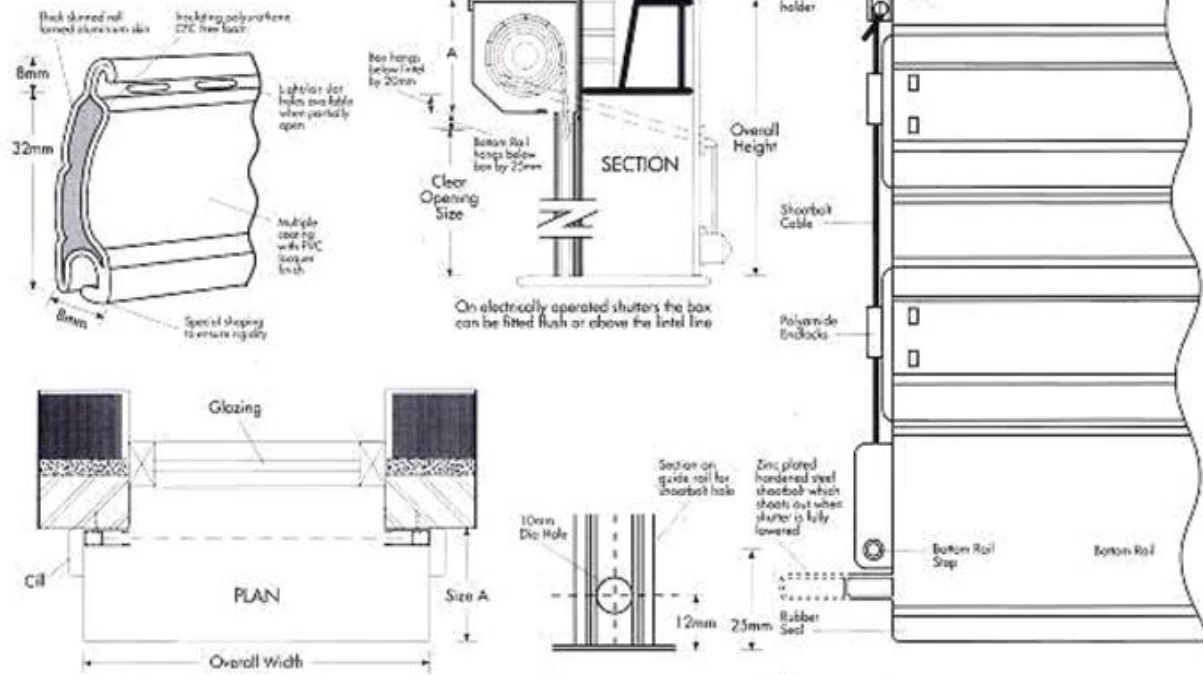
Do you want to control the inside temperature of your home far more effectively than ever before? Warm Protection aluminium roll shutters will help you reduce your energy cost for heating by up to 40%. They also reduce noise from outside and improve your quality of life. The rigid aluminium shutters increase protection against vandalism and burglary with our unique locking mechanism.

During sunshine hours Warm Protection shutters control direct sunlight and reduce the fading effects of the sun. Warm Protection aluminium roll shutters can change daytime into night time, giving complete privacy and improved sleeping conditions.

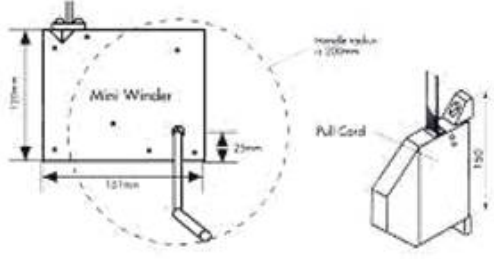
Our shutters have been proven world-wide by millions of units in daily use. Buy quality-buy Warm Protection.



Super Mini Technical Details



Ref	Guide types for super mini	
HTF		Supplied as standard with all shutters unless otherwise stated.
LHTF		Supplied if requested for between wall fixing the flange being used for a fixing point
HTF40 1.5mm		Supplied if requested on large span shutters Or on exposed areas for extra security



Overall Height Up To	Box Size A
1243mm	137x137
1640mm	150x150
2045mm	165x165
2342mm	180x180
2950mm	205x205

Maximum usable size 3000x2500mm. Weight per Sqm 4.5Kg
Minimum size for electric operation 750mm o/a/w width

Super Mini Specifications

Curtain Constructed from double skinned roll formed pre-stove enameled aluminium sheet with high abrasive resistance. Each profile has a pvc lacquer finish added after coating for greater abrasive resistance. Each profile has a cfc free polyurethane foam incore for rigidity, thermal and acoustic benefits. Each alternate profile is secured with a hardened plastic endlock, which is secured by diverse stainless steel staples. A steel twine cable is threaded between the endlocks and is located into an auto shootbolt mechanism which shoots steel bolts into the guide runners when the shutter is fully lowered. The locking mechanism is only available on manually operated shutters, electrically operated shutters have an alternative autolock system. Each curtain is fitted with a double skinned extruded aluminium bottom rail complete with rubber seal for protection on window cills. Colours available are white, brown and cream. Colours available for bottom rails are white or dark brown.

Box– Constructed from roll formed pre-stove enamelled aluminium sheet, which is roll formed incorporating special folds to ensure rigidity and strength. Colours available are white or dark brown.

Box Ends – Constructed from die cast aluminium, high pressure moulded and stove enamelled to suit the box colour.